

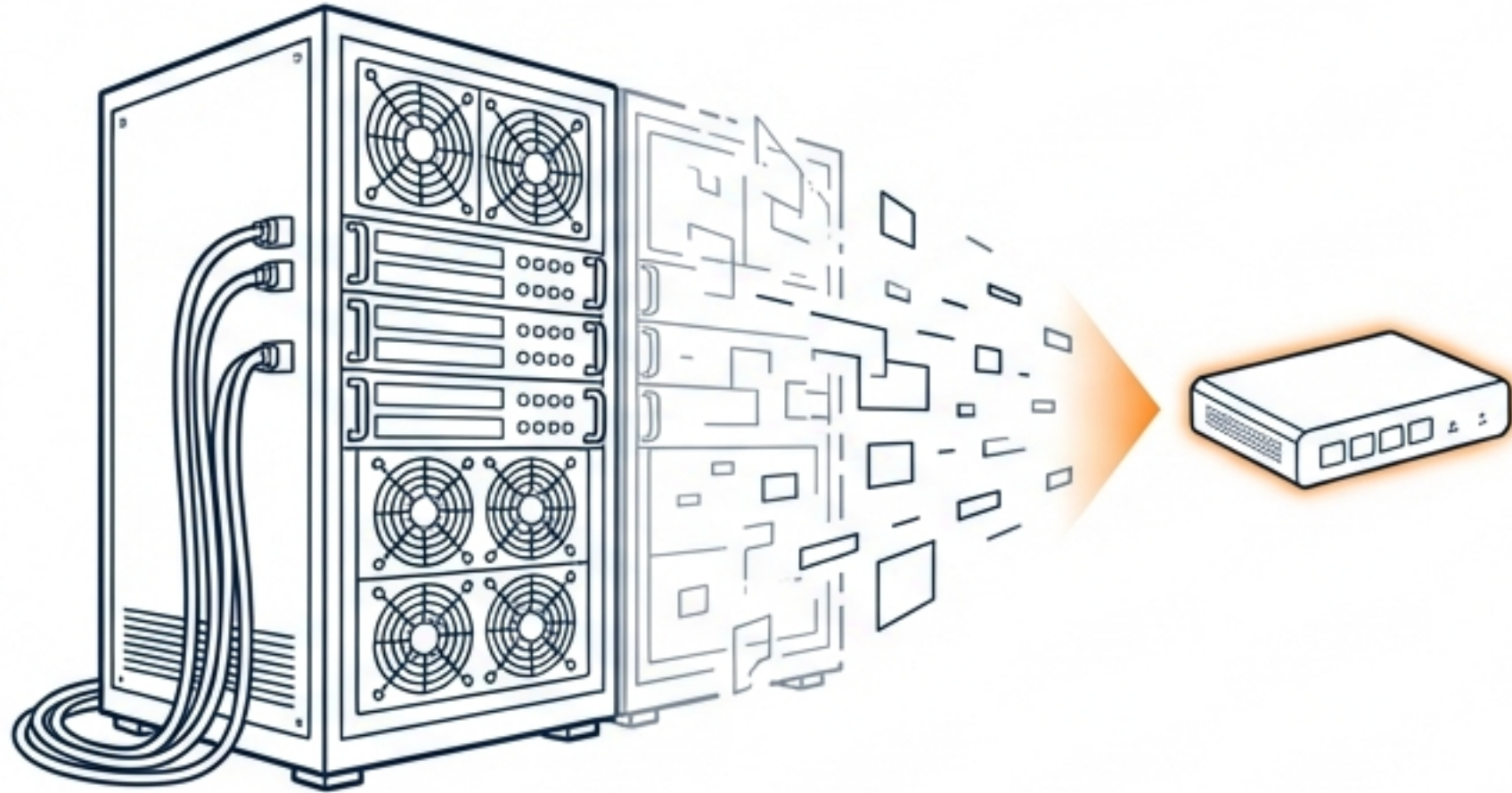
NETGATE 2100 MAX

The Pound-for-Pound
Security Champion

Unbeatable performance
and flexibility for Home, SMB,
and Remote Deployments.



SIGNIFICANT PERFORMANCE IN A SILENT FOOTPRINT



Compact & Powerful

- Dual-core ARM Cortex A53 architecture.

Silent Operation

- 🔇 Passive cooling system with zero moving parts.

Versatile

- Ideal for edge deployments requiring high throughput.

The MAX Difference

- 📁 Upgraded 128 GB SSD storage for advanced logging.

Scalable Security for Every Scenario



Remote Workers

Secure VPN connectivity for the Work from Anywhere era.



SMB Networks

Enterprise-grade protection without the enterprise complexity.



Branch Offices

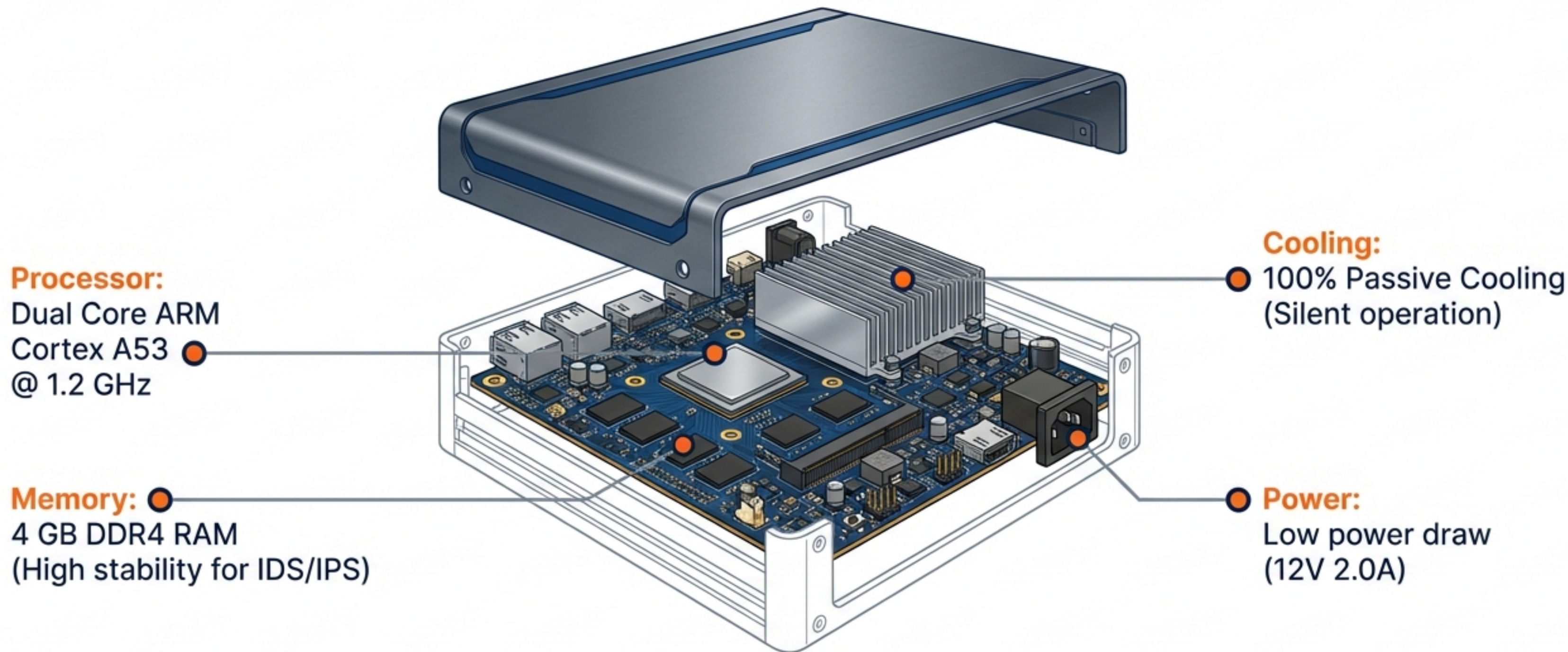
Reliable site-to-site connectivity for distributed organisations.



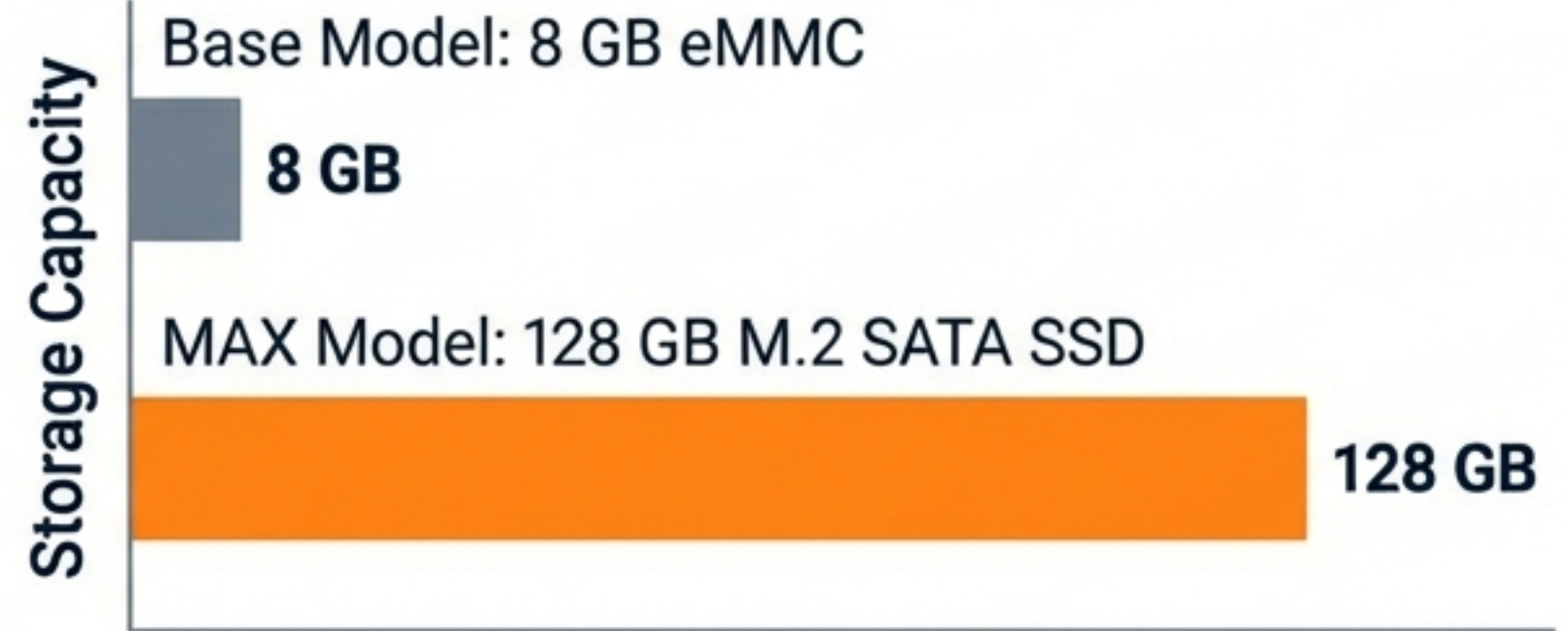
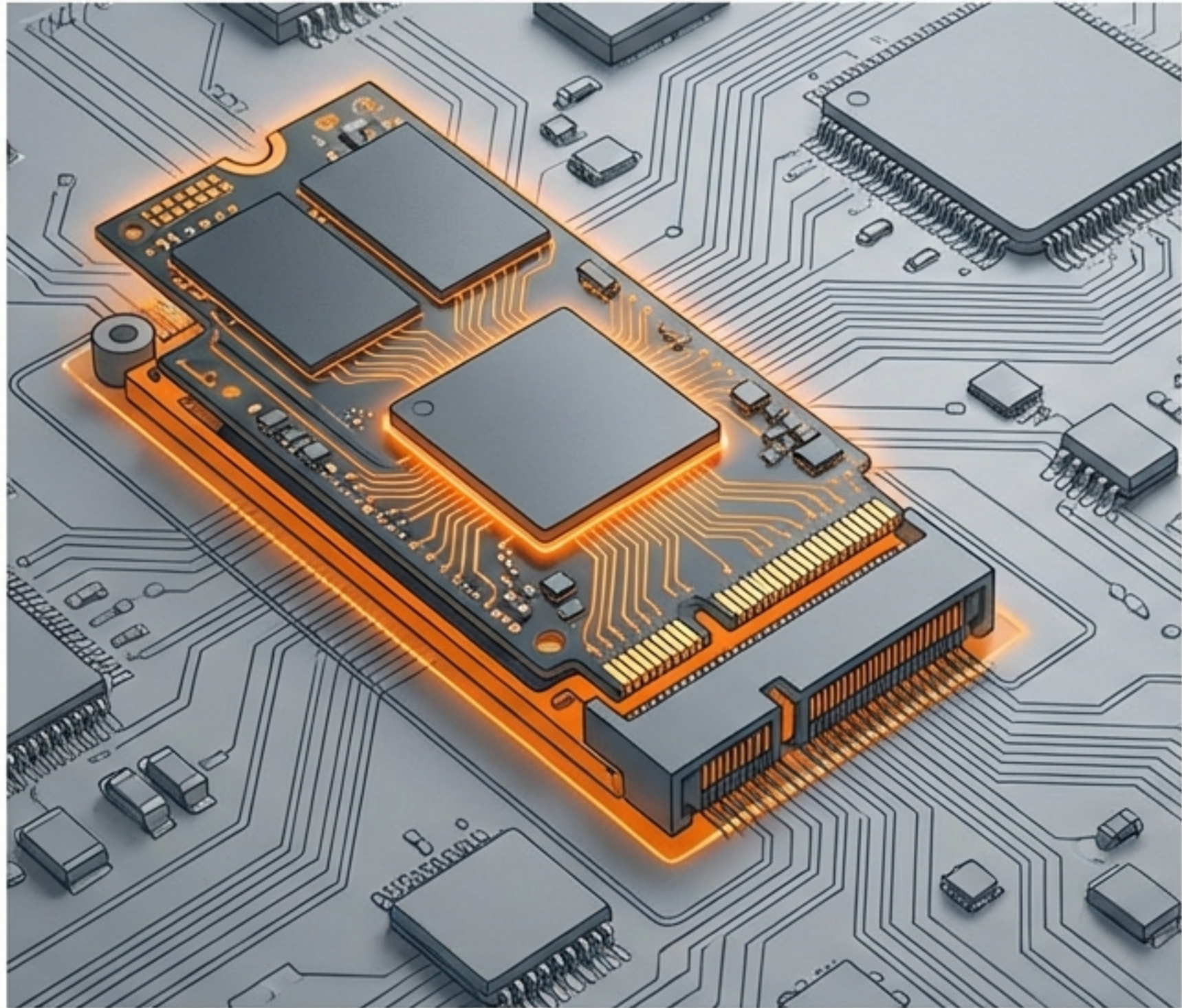
MSPs / MSSPs

A robust on-premises appliance for managed service providers.

The Anatomy of Efficiency

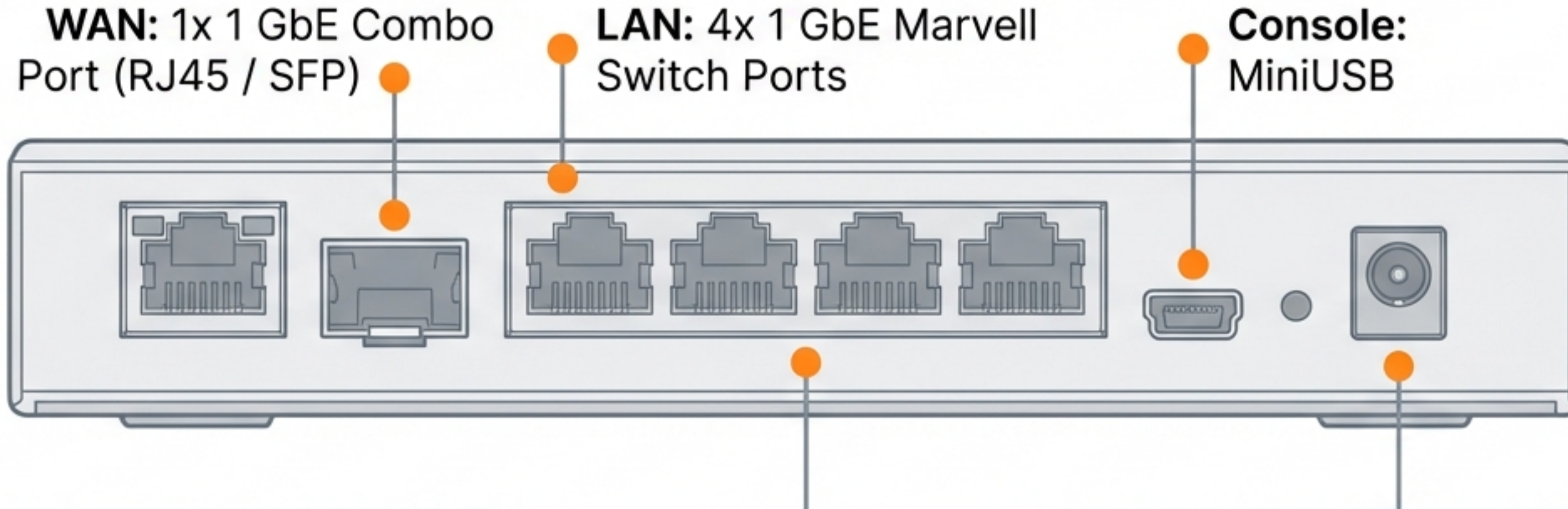


The 'MAX' Advantage: Storage that Scales



- ✓ **Extensive Logging:** Store significantly more historical data locally.
- ✓ **Add-on Packages:** Run storage-hungry extensions without limits.
- ✓ **Future Proofing:** Headroom for OS updates and expanded configurations.

Flexible Connectivity & Expansion



Internal Expansion

- ✓ 1x M.2 'B' key slot (SSD/LTE)
- ✓ 1x miniPCle slot (Wi-Fi)
- ✓ microSIM slot

Internal Expansion

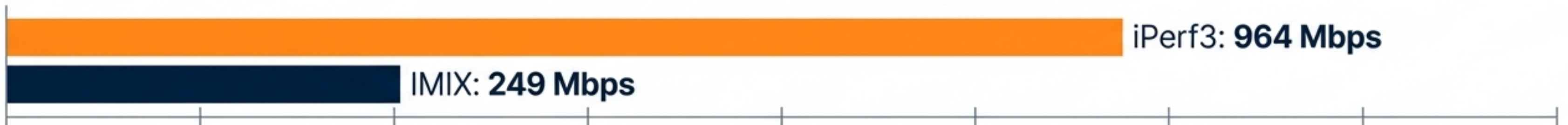
- ✓ 1x M.2 'B' key slot (SSD/LTE)
- ✓ 1x miniPCle slot (Wi-Fi)
- ✓ microSIM slot

Proven Throughput Performance

L3 Forwarding (Routing)



Firewall (10k ACLs)



IPsec VPN (AES-GCM-128)



Tests conducted with pfSense Plus software version 22.01.

Enterprise Security, Simplified



No Artificial Limits

Unlocks full hardware potential (**up to 10 Gbps** software capability).



Business Assurance

Proven reliability trusted by commercial networks globally.



Ecosystem

Access to flexible 3rd-party application options.

Comprehensive Threat Prevention



Firewall

Stateful packet inspection with per-interface configuration.



IDS / IPS

Snort-based packet analyser for intrusion detection.



Content Control

Domain filtering, blacklisting, and **Geo-blocking**.

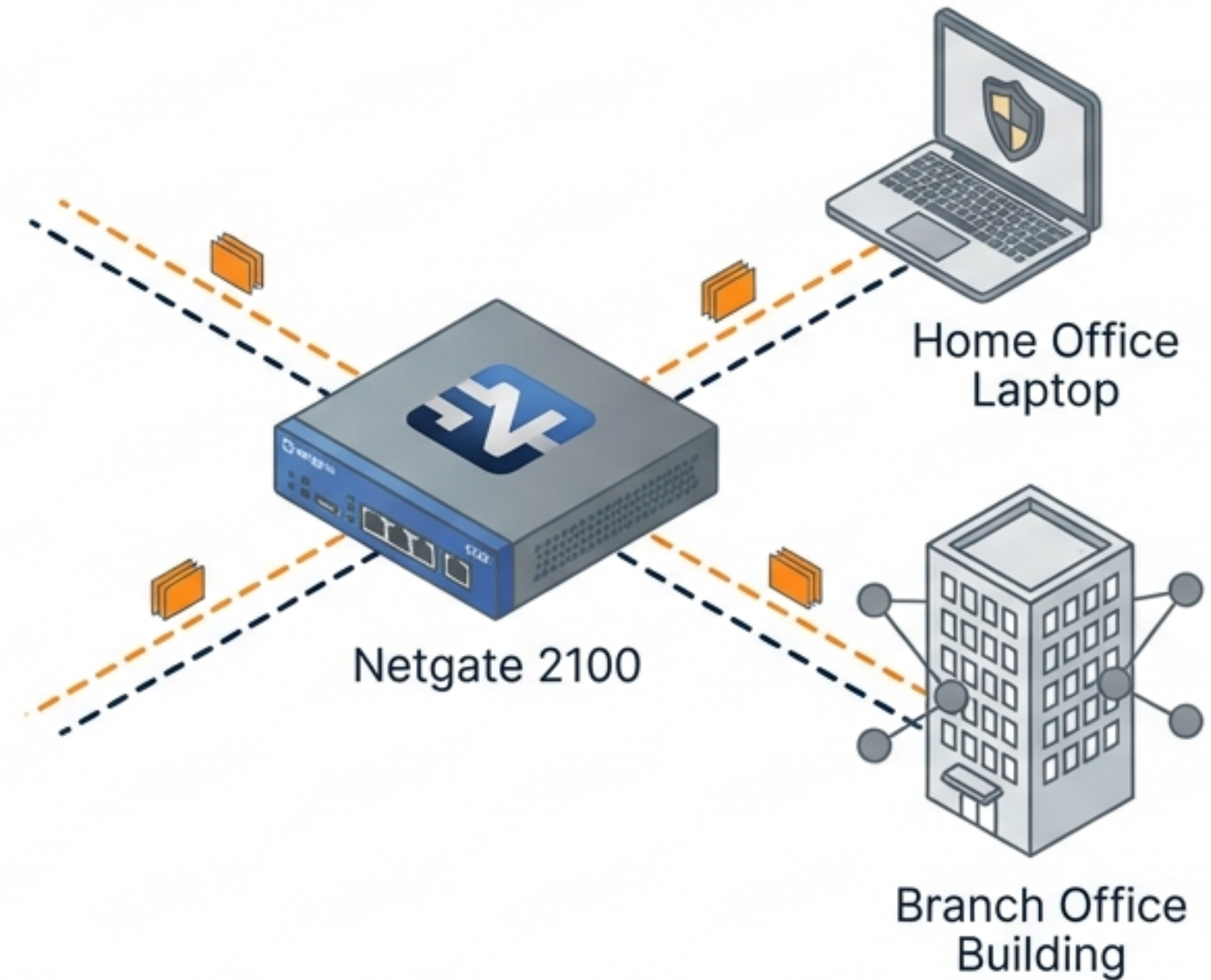


App Defence

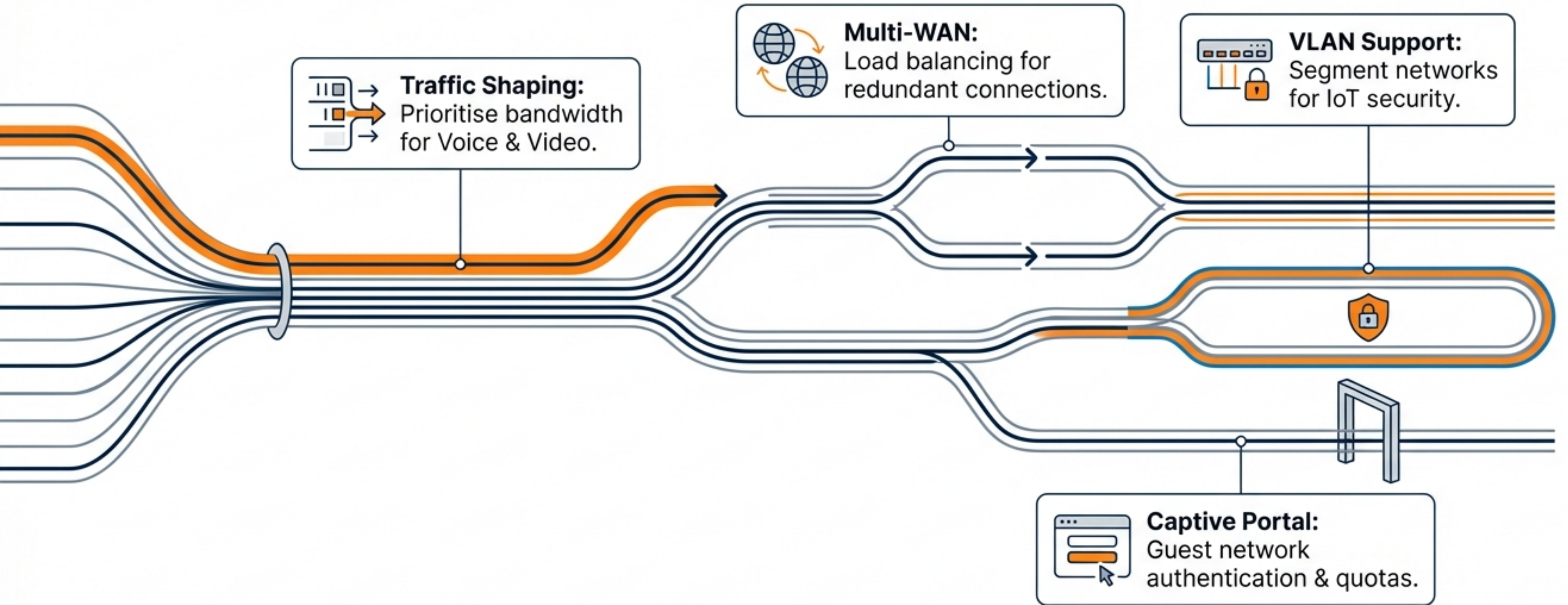
Layer 7 application detection and blocking.

Secure Remote Access & VPN

- **Protocols:** IPsec (Route/Policy-based), OpenVPN, WireGuard®.
- **Performance:** Intel IPsec Multi-Buffer (IIMB) & OpenVPN DCO.
- **Flexibility:** Split tunnelling support.
- **Ease of Use:** Amazon VPC Wizard included.

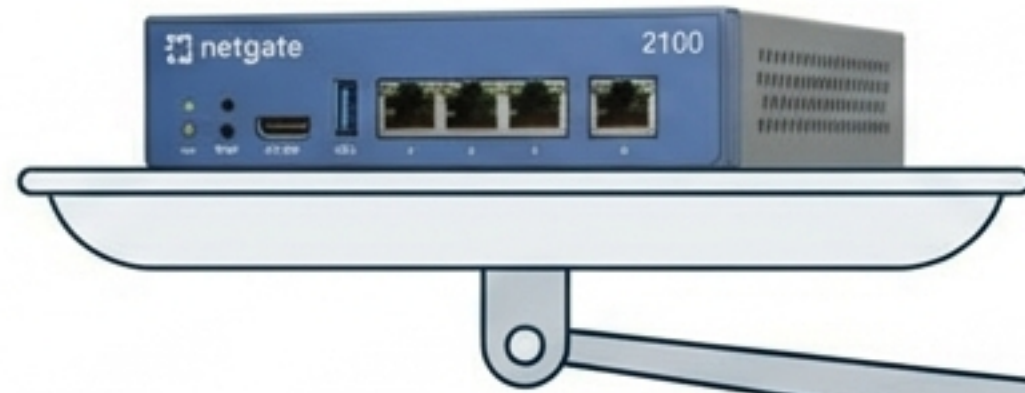


Advanced Network Control



Low Total Cost of Ownership

One-time purchase.



Netgate 2100:



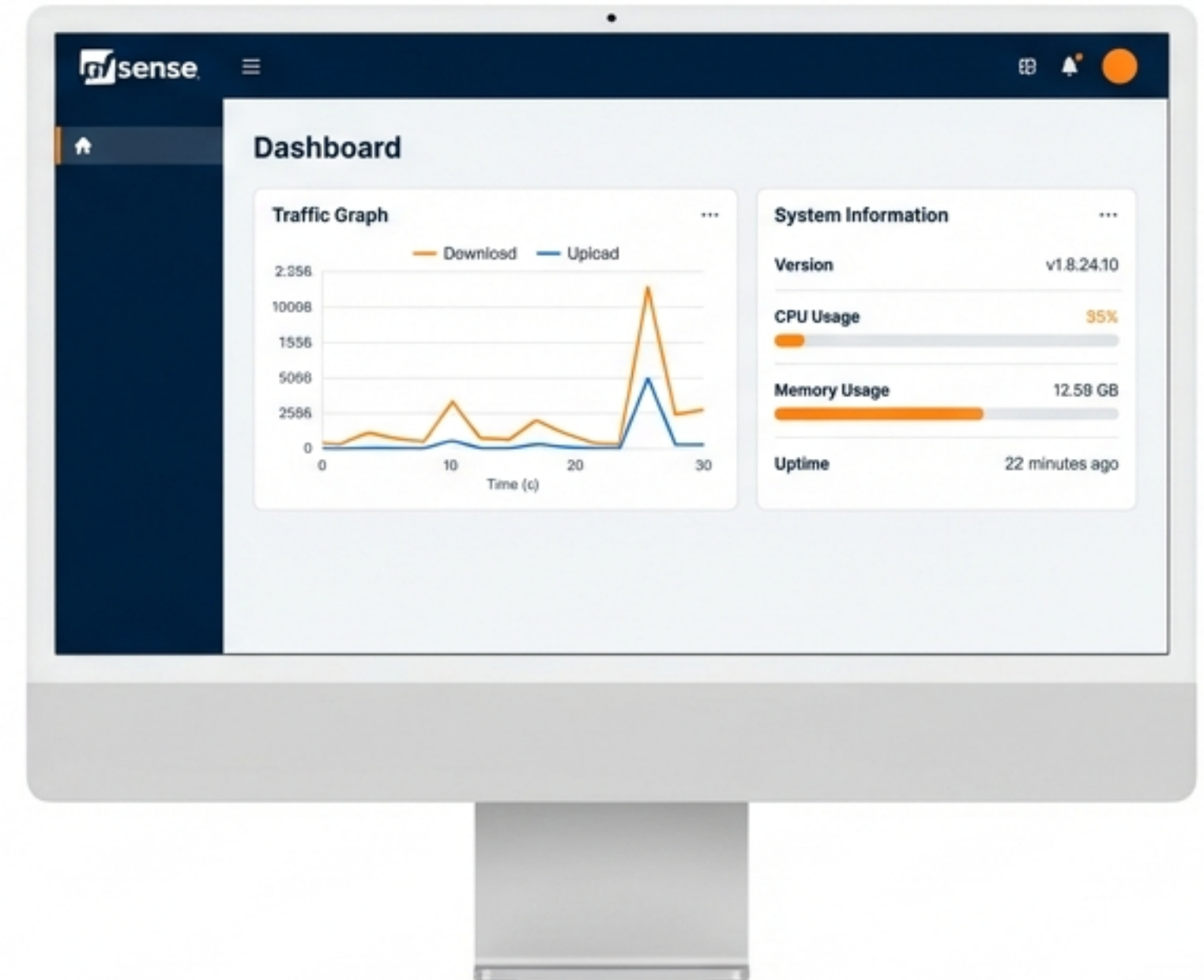
Unlimited Users,
Firewall Rules, **IPsec**
Tunnels, **Dual WAN**

The Netgate Promise:

- **No Hidden Fees:** No feature-based pricing or artificial add-ons.
- **Long Lifecycle:** No moving parts to wear out.
- **Energy Efficient:** Low power requirements reduce OpEx.

Management Without the Complexity

- 🖱️ **Web-based GUI:** No command line interface required.
- 🔧 **Setup Wizard:** Streamlined initial configuration.
- ☁️ **ACB Service:** Automatic Encrypted Configuration Backup.
- 📊 **Monitoring:** Customisable dashboard with local graphs.



World-Class Support Included



**24x7 Zero-to-Ping
Support**



**TAC Lite Access
& Documentation**



**1-Year Hardware
Warranty**

Netgate Global Support is included to ensure your appliance is online and operational.

Technical Specifications

Specification	Details
Dimensions	42.2 mm x 108 mm x 172.7 mm (Desktop / Wall Mount capable)
Environment	Operating Range 0°C to 50°C (32°F to 122°F)
Power Input	100-240V AC, 50-60 Hz (UK, US, EU, or ANZ cord included)
Certifications	CE, FCC (Class B), RoHS, UL, RCM, VCCI, UKCA